

**CHEM****BIO**CHEM

## Supporting Information

© Copyright Wiley-VCH Verlag GmbH & Co. KGaA, 69451 Weinheim, 2005

© Copyright Wiley-VCH Verlag GmbH & Co. KGaA, 69451 Weinheim, 2006

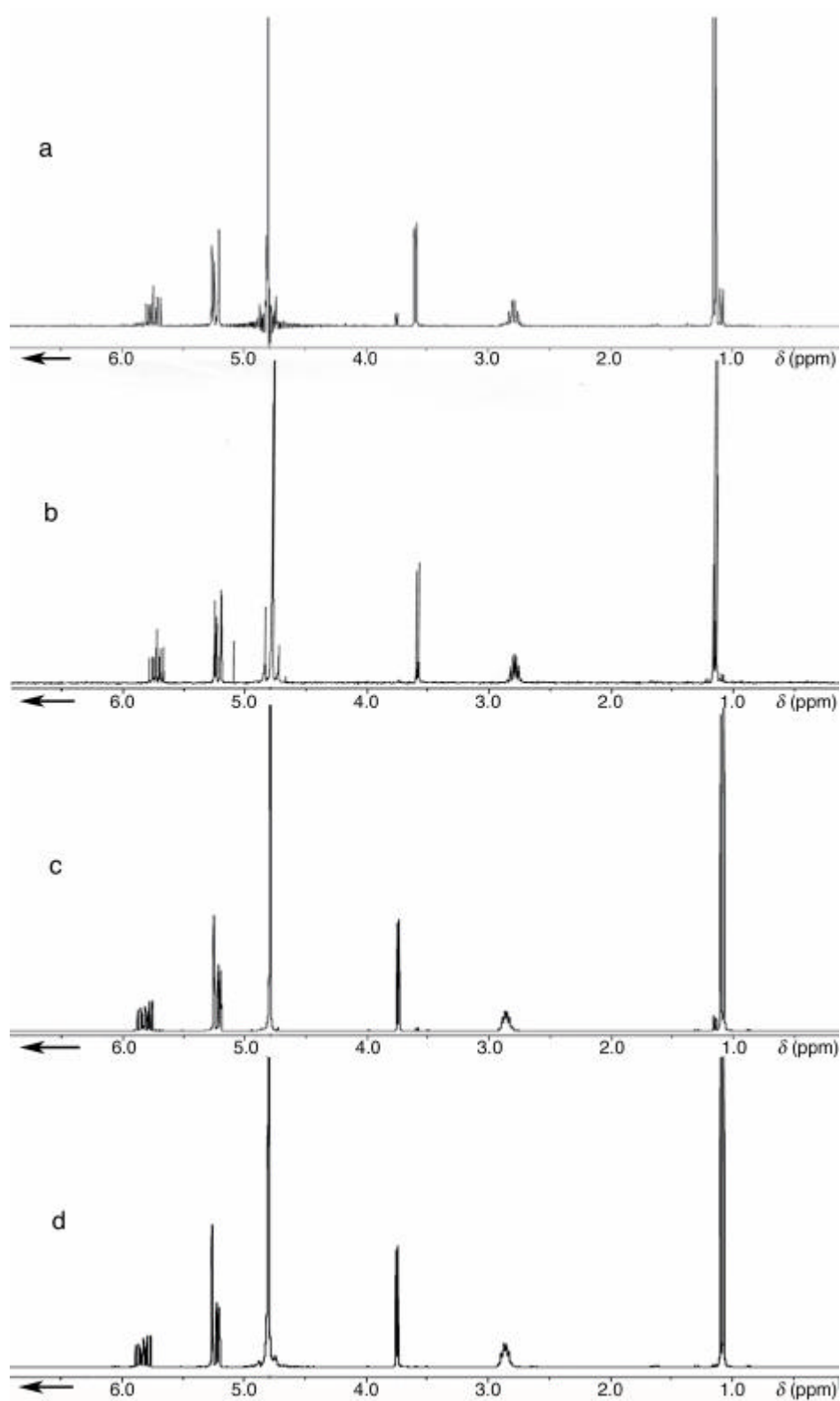
CHEM**BIO**CHEM

## Supporting Information

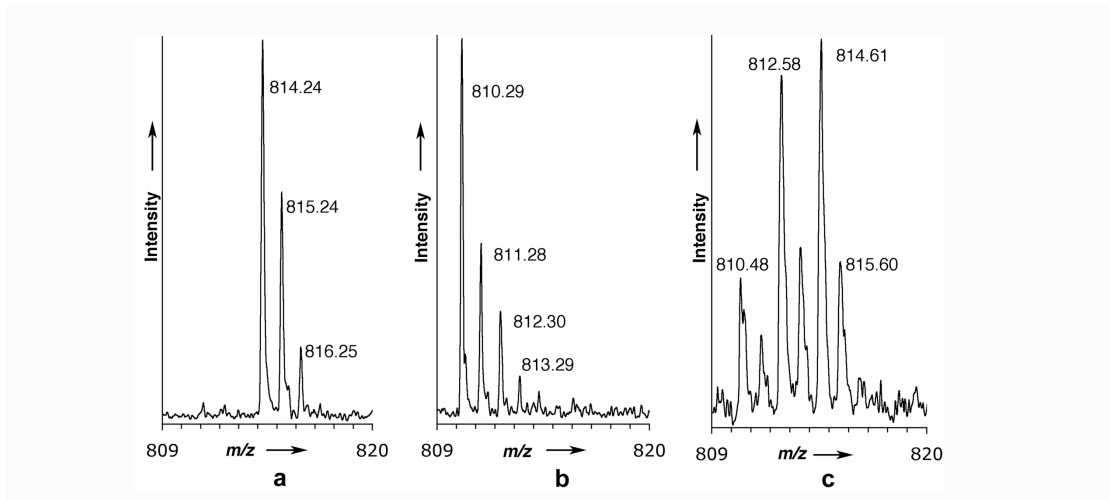
for

Stereoselective Incorporation of an Unsaturated Isoleucine Analogue  
into Proteins in vivo

Marissa L. Mock, Thierry Michon, Jan C. M. van Hest, and David A. Tirrell\*



**Figure S1.**  $^1\text{H}$ -NMR spectra of a) SS-E-Ile after 1 recrystallization, b) SS-E-Ile after an additional 5 recrystallizations, c) SR-E-Ile after 1 recrystallization, and d) SR-E-Ile after an additional 5 recrystallizations.



**Figure S2.** Unprocessed MALDI-TOF spectra of tryptic fragments of mDHFR produced in media supplemented with a) Ile, b) SS-E-Ile and c) SR-E-Ile. Mass shifts of  $-2$  per Ile residue in the peptide INIVLSR (residues 86–92,  $m/z = 814.5$ ) in panel b) indicate incorporation of SS-E-Ile. A lesser extent of incorporation of an unsaturated amino acid is also evident in proteins produced in culture supplemented with c) SR-E-Ile ( $de = 98\%$ ).